

CAD-Bibliothek
CAD Library

Aluminium-Systeme

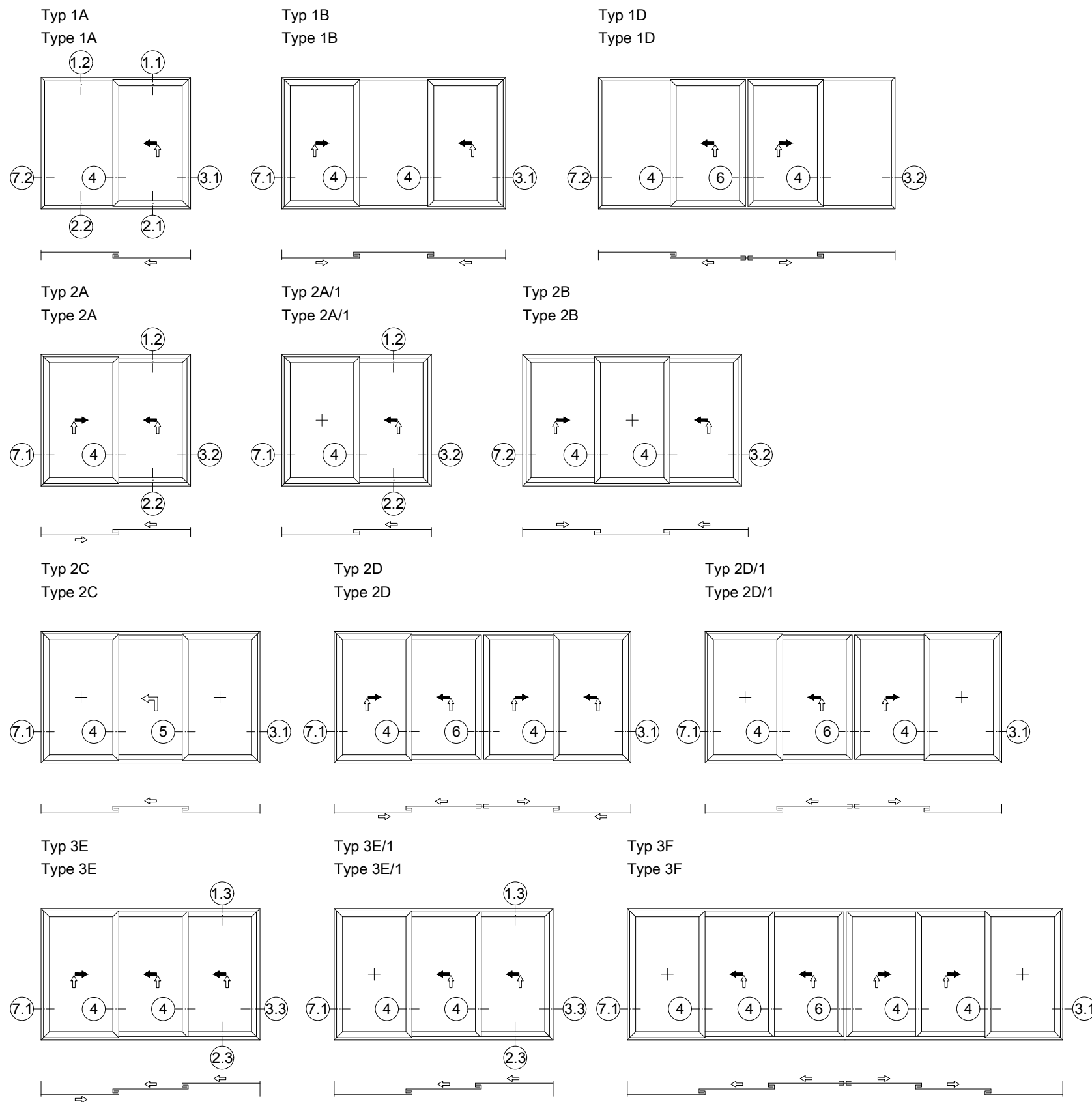
Schiebesysteme

Schüco Schiebe- und Hebeschiebesystem ASS 50

Aluminium Systems

Sliding Systems

Schüco Sliding and Lift-and-Slide System ASS 50



Technische Informationen

Technical information

Prüfungen und Normen ***

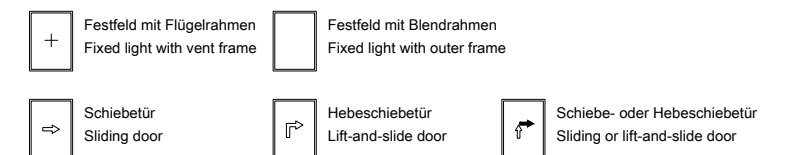
Tests and standards

Windlastwiderstand nach DIN EN 12210*	bis Klasse B5
Wind load resistance in accordance with DIN EN 12210	Up to class B5
Schlagregendichtheit nach DIN EN 12208**	bis Klasse 9A
Watertightness in accordance with DIN EN 12208	Up to class 9A
Luftdurchlässigkeit nach DIN EN 12207	bis Klasse 4
Air permeability in accordance with DIN EN 12207	Up to class 4
Bedienkräfte nach DIN EN 13115	Klasse 1
Operating forces in accordance with DIN EN 13115	Class 1
Mechanische Beanspruchung nach DIN EN 13115	Klasse 4
Mechanical loading in accordance with DIN EN 13115	Class 4
Einbruchhemmung nach DIN V ENV 1627**	bis Klasse 2
Burglar resistance in accordance with DIN V ENV 1627**	Up to class 2
Schalldämmung nach DIN EN ISO 140-3**	bis 40 dB
Sound reduction in accordance with DIN EN ISO 140-3**	Up to 40 dB
Dauerfunktion nach DIN EN 12400	Klasse 2
Durability in accordance with DIN EN 12400	Class 2
Wärmedämmung nach DIN EN ISO 1077-2	Uw < 2,0 W/(m²K)
Thermal insulation in accordance with DIN EN ISO 1077-2	Uw < 2,0 W/(m²K)

* Durchbiegungsverhalten profilabhängig
The amount of deflection will depend on the profile

** Abhängig von der Ausführung (siehe Prüfzeugnis)
Design-specific (see test certificate)

*** Die Angaben beschreiben die Bestwerte des Gesamtsystems.
Die Eigenschaften einer jeweils gewählten Ausführungsvariante oder Elementkombination sind im Einzelfall anhand der ausführlichen Prüfdokumentation zu bestimmen.
The information describes the optimum values of the entire system.
The properties of a selected design option or unit combination have to be determined individually based on the comprehensive test documentation.

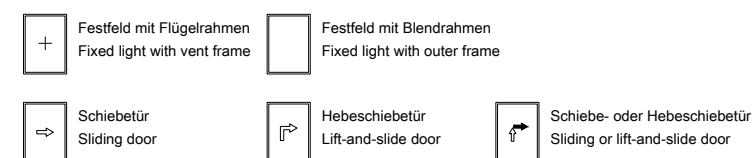
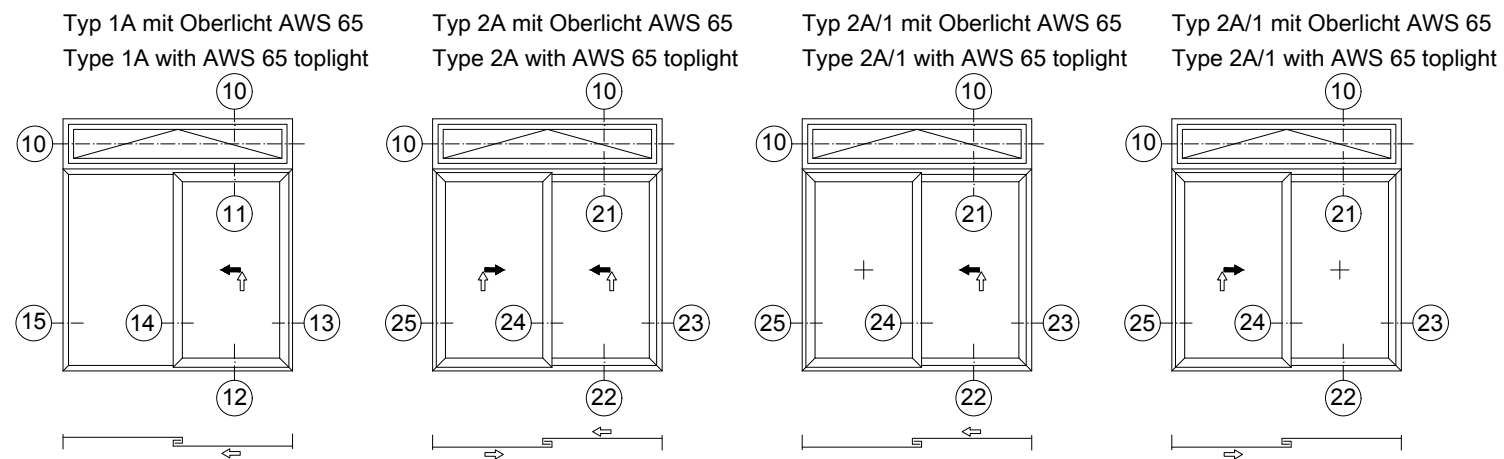


Elementbeispiele
- Schiebetür / Hebeschiebetür
Unit examples
- Sliding door / lift-and-slide door

AB3000080

0302

Schüco ASS 50



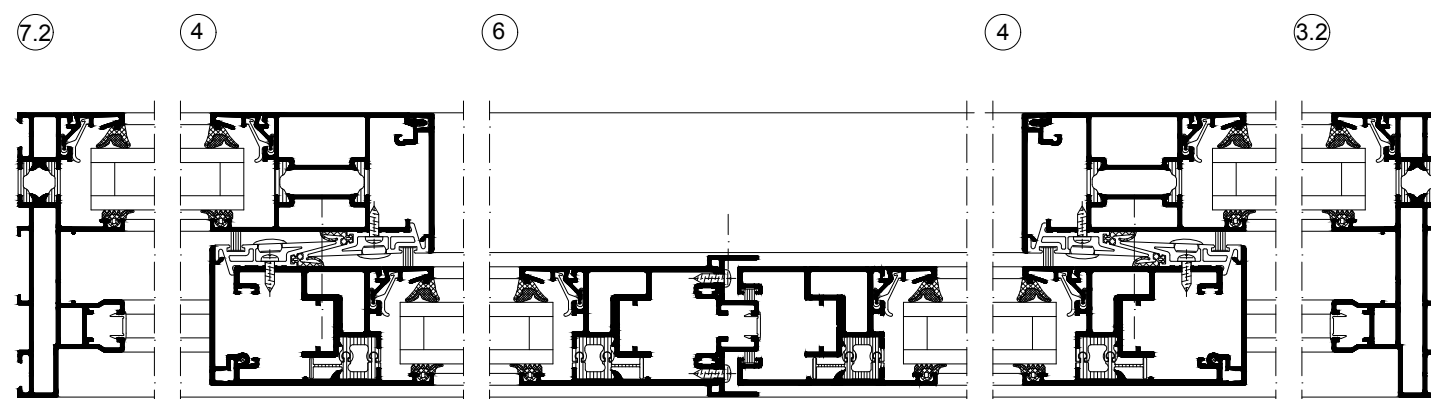
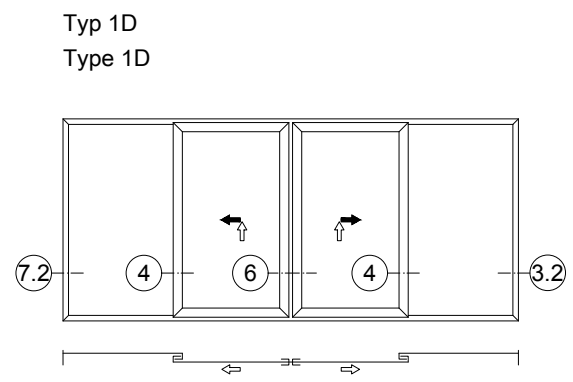
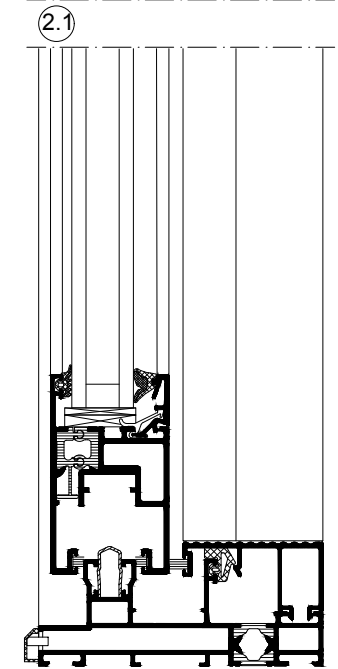
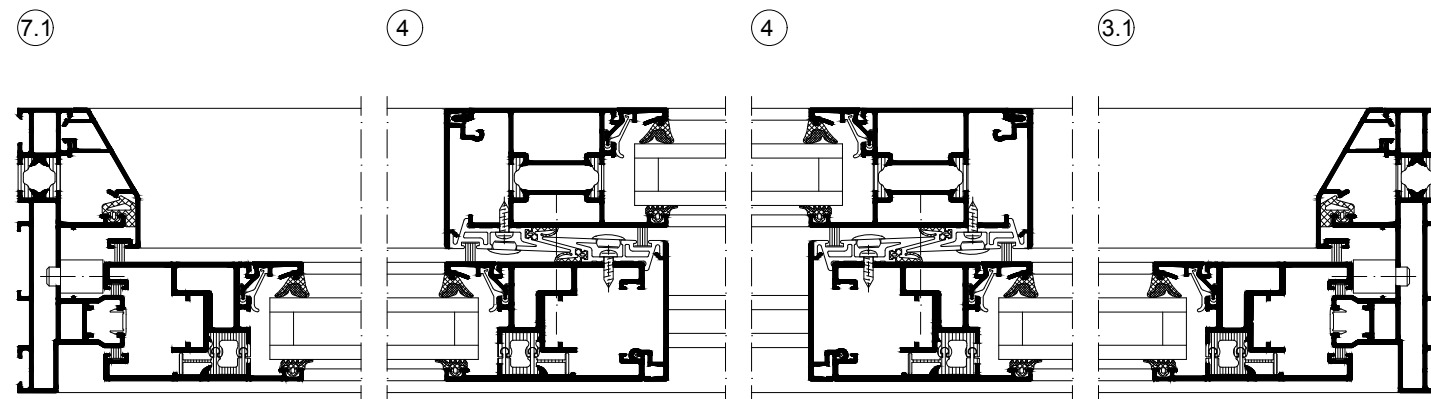
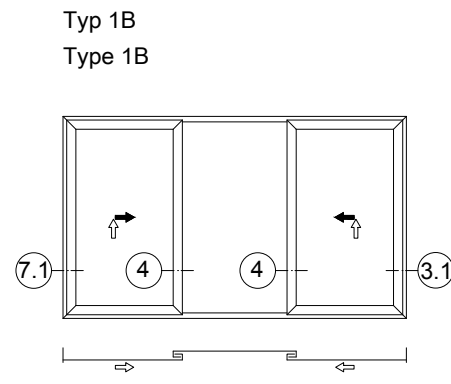
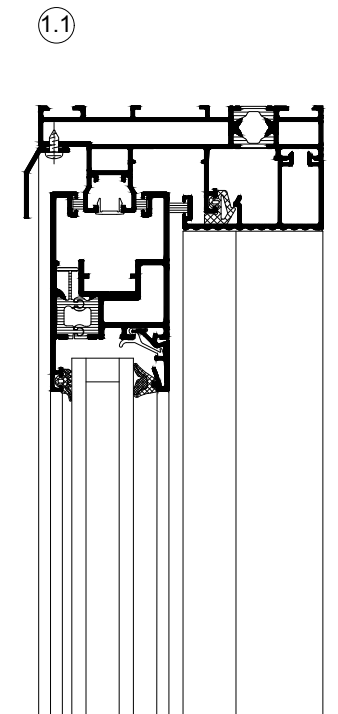
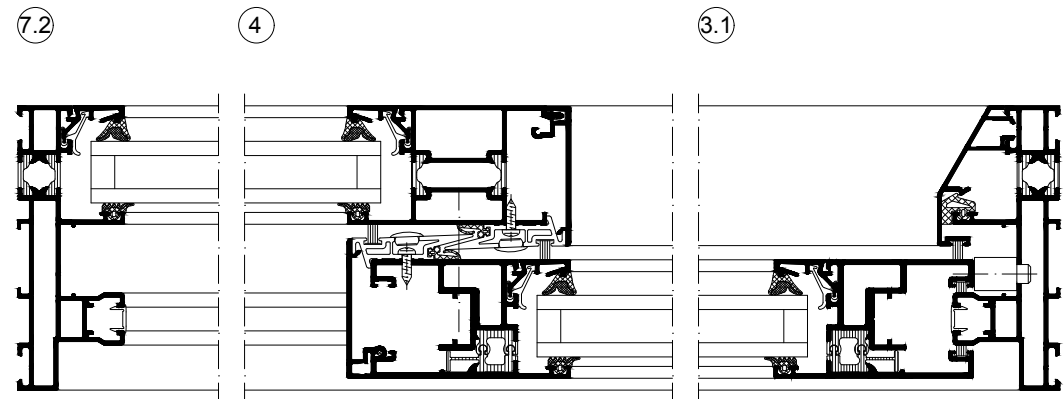
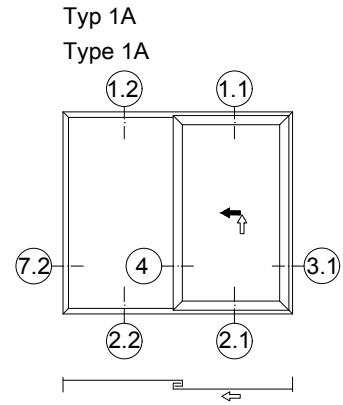
Elementbeispiele
- Schiebetür / Hebeschietbetür

Unit examples
- Sliding door / lift-and-slide door

AB3000081

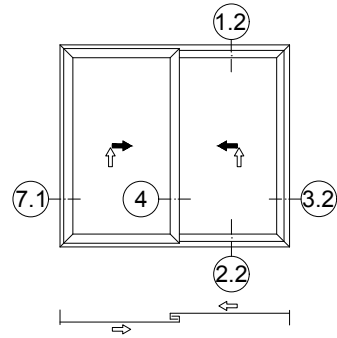
0302

Schüco ASS 50

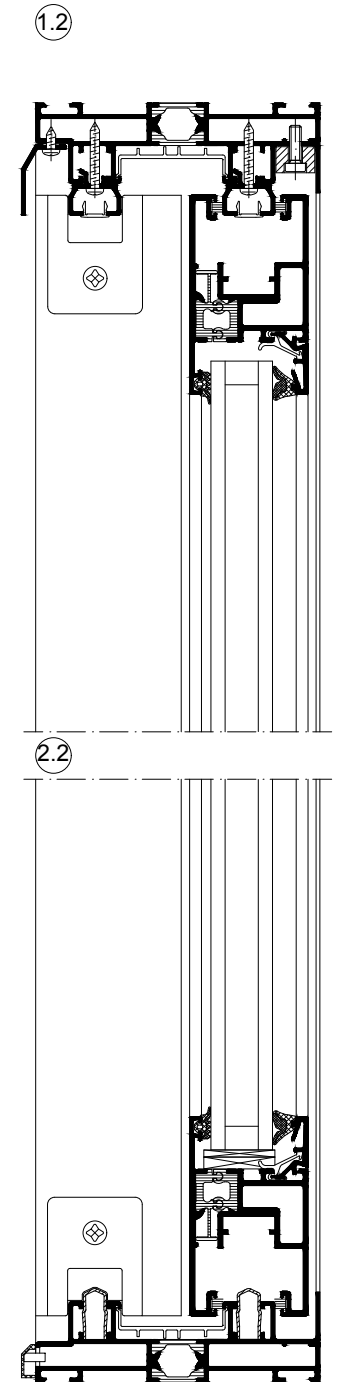
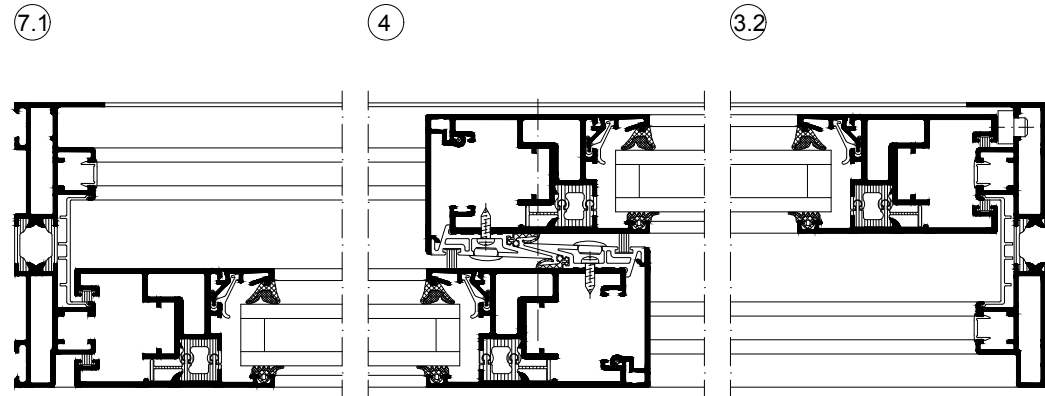
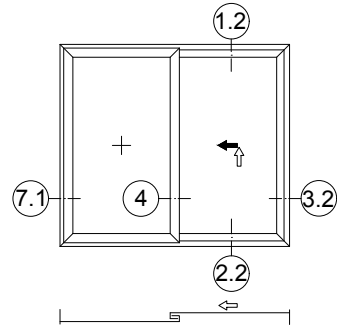


Elementschnitte - 1-gleisig Unit section details - Single track	AB3000082
	0302
Schüco ASS 50	

Typ 2A
Type 2A



Typ 2A/1
Type 2A/1



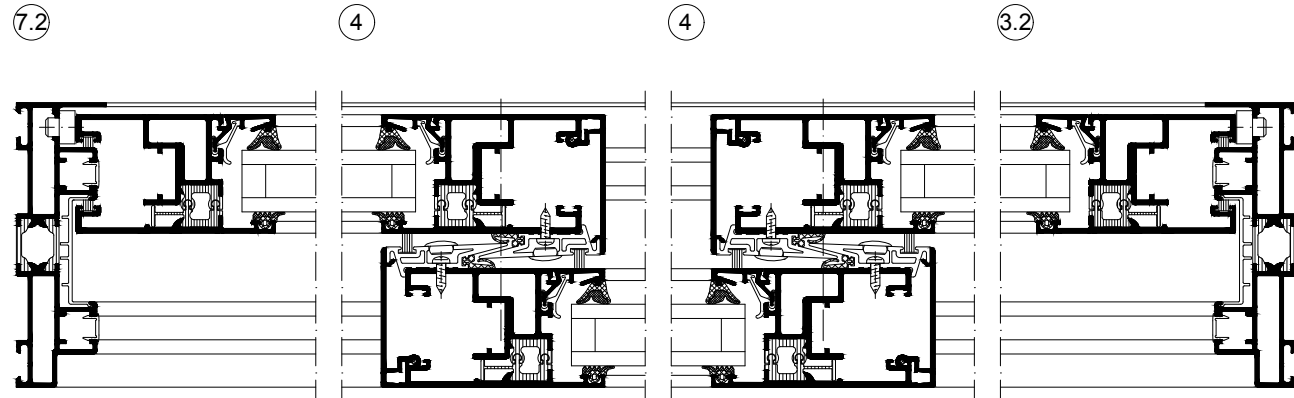
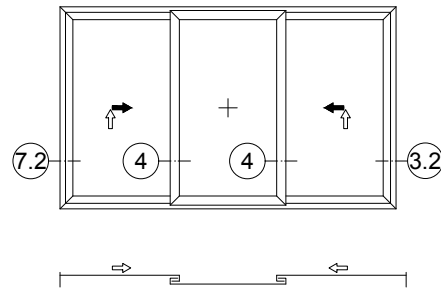
Elementschnitte
- 1-/2-gleisig
Unit section details
- Single/double-track

AB3000083

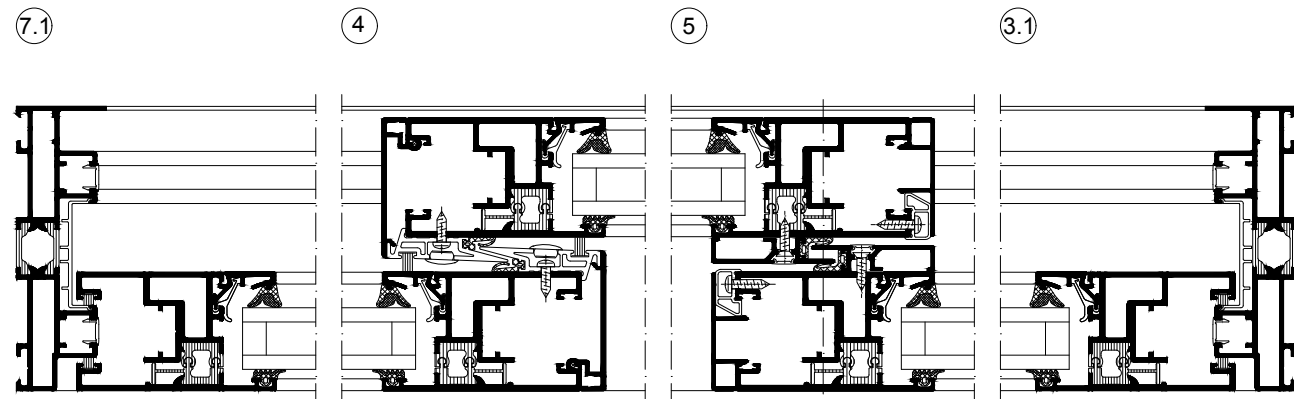
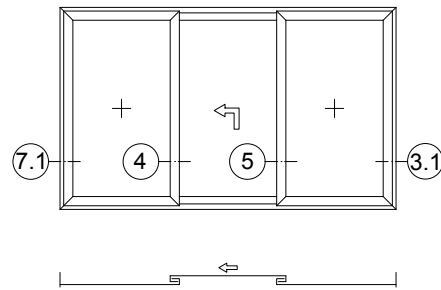
0302

Schüco ASS 50

Typ 2B
Type 2B

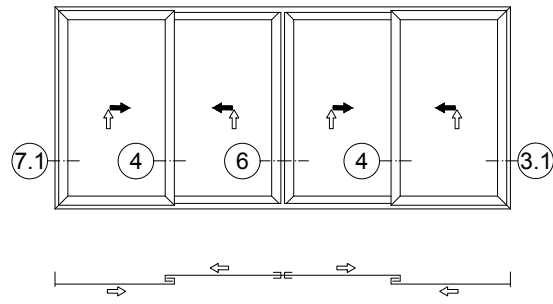


Typ 2C
Type 2C

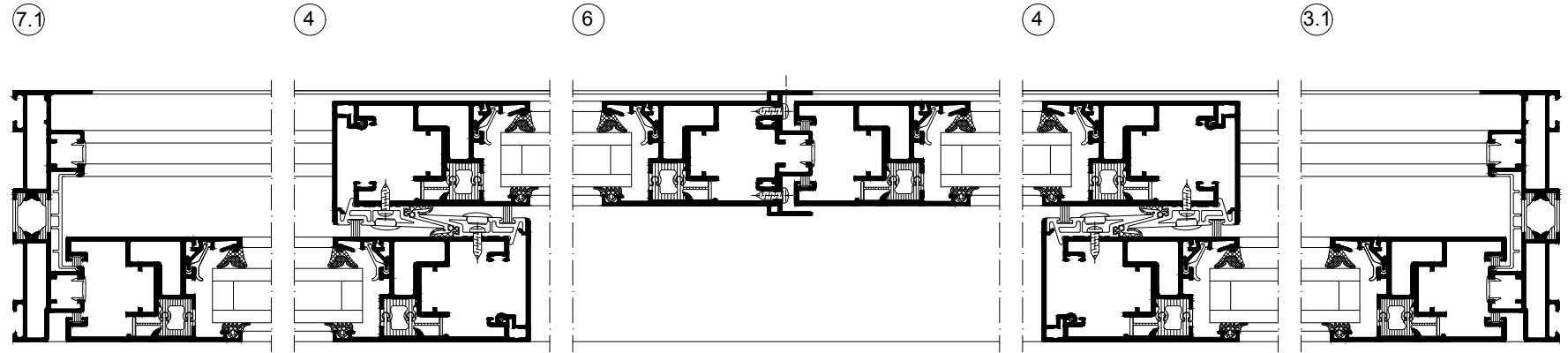
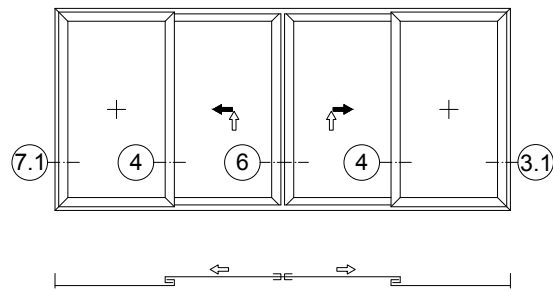


Elementschnitte - 2-gleisig Unit section details - Double track	AB3000084
	0403
Schüco ASS 50	

Typ 2D
Type 2D

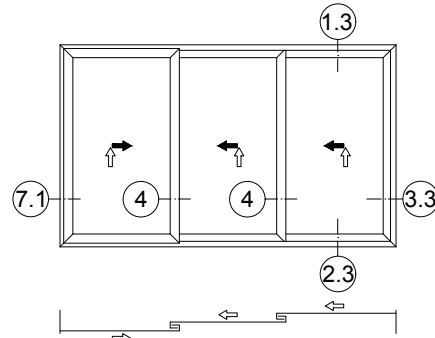


Typ 2D/1
Type 2D/1

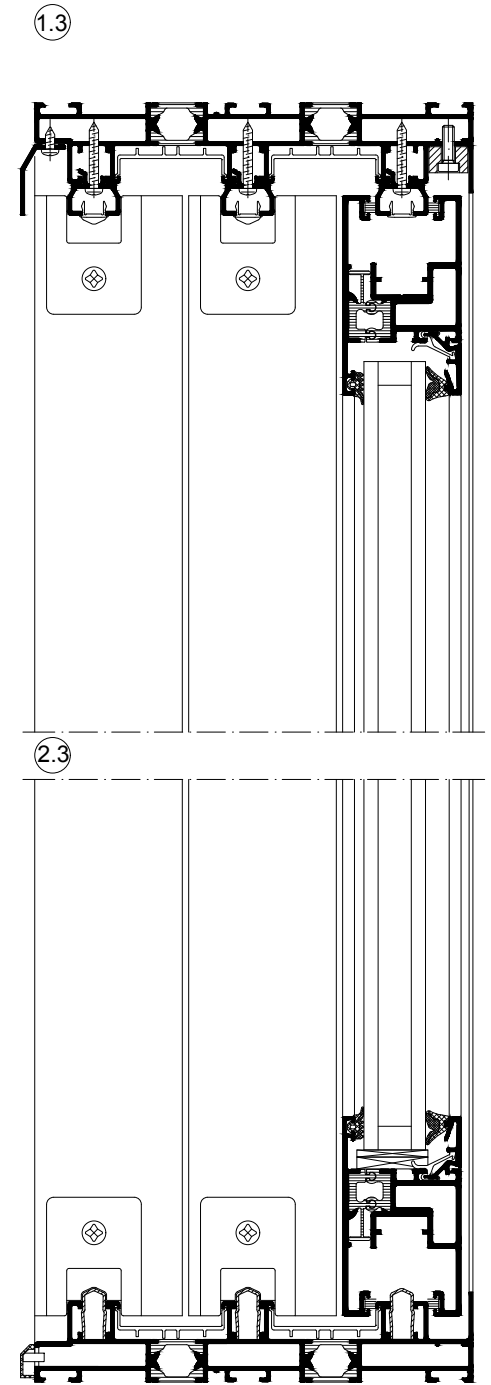
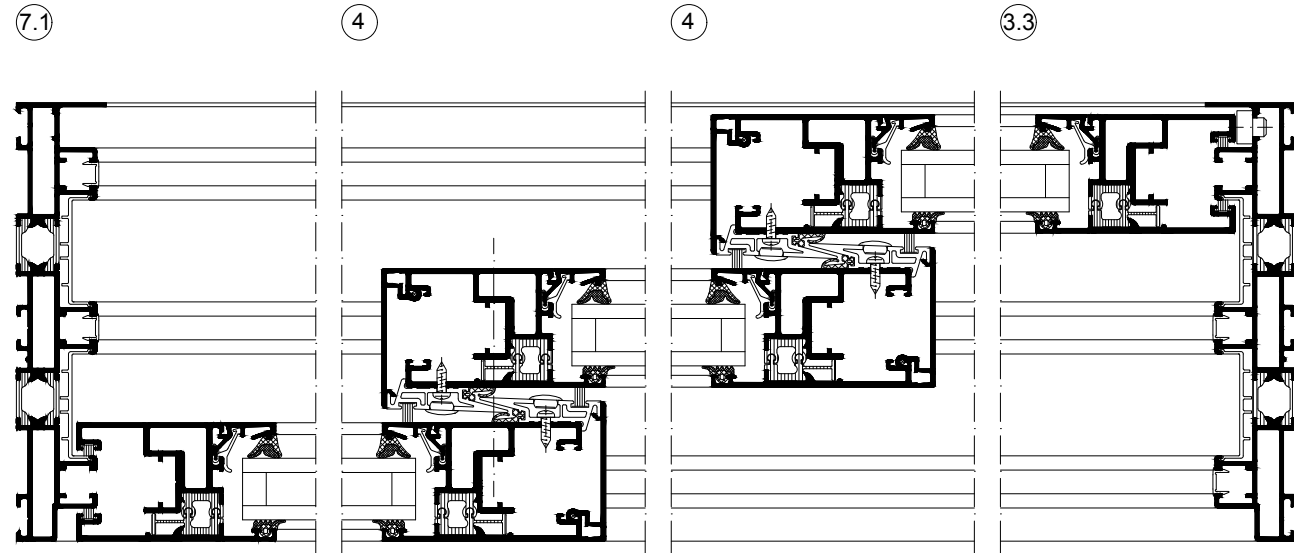
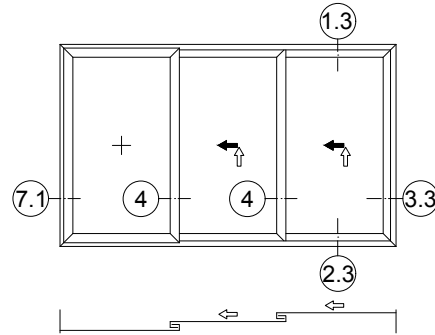


Elementschnitte - 2-gleisig Unit section details - Double track	AB3000149
	0100
Schüco ASS 50	

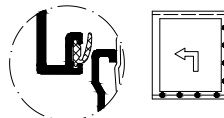
Typ 3E
Type 3E



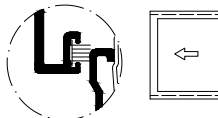
Typ 3E/1
Type 3E/1



Anschlagdichtung
Rebate gasket



Bürstendichtung
Brush seal



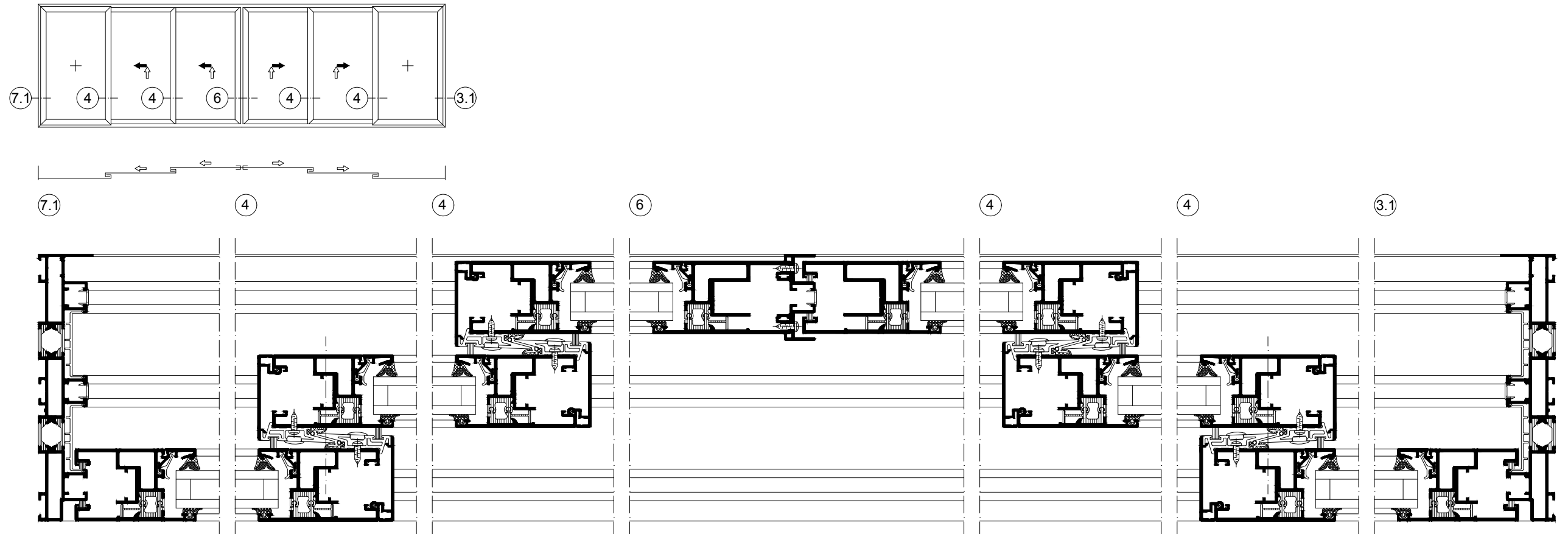
Elementschnitte - 3-gleisig
Unit section details - Triple track

AB3000085

0302

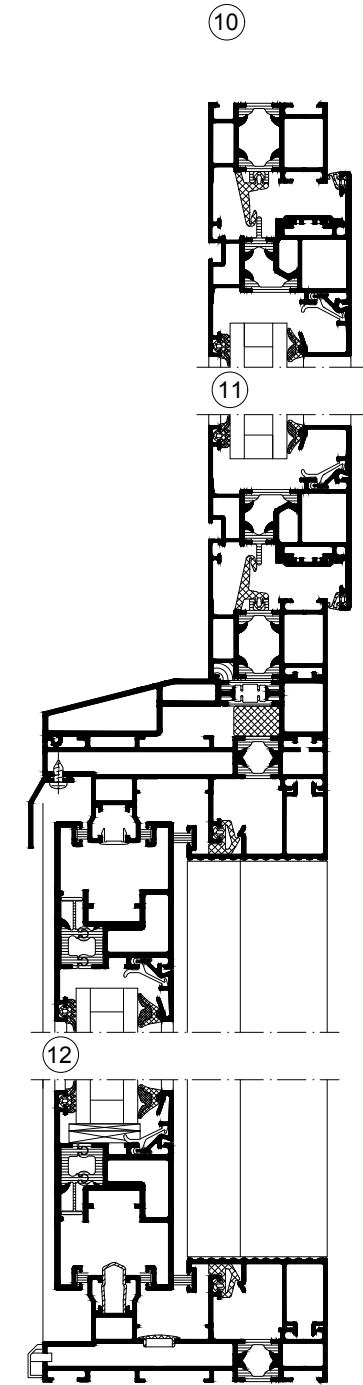
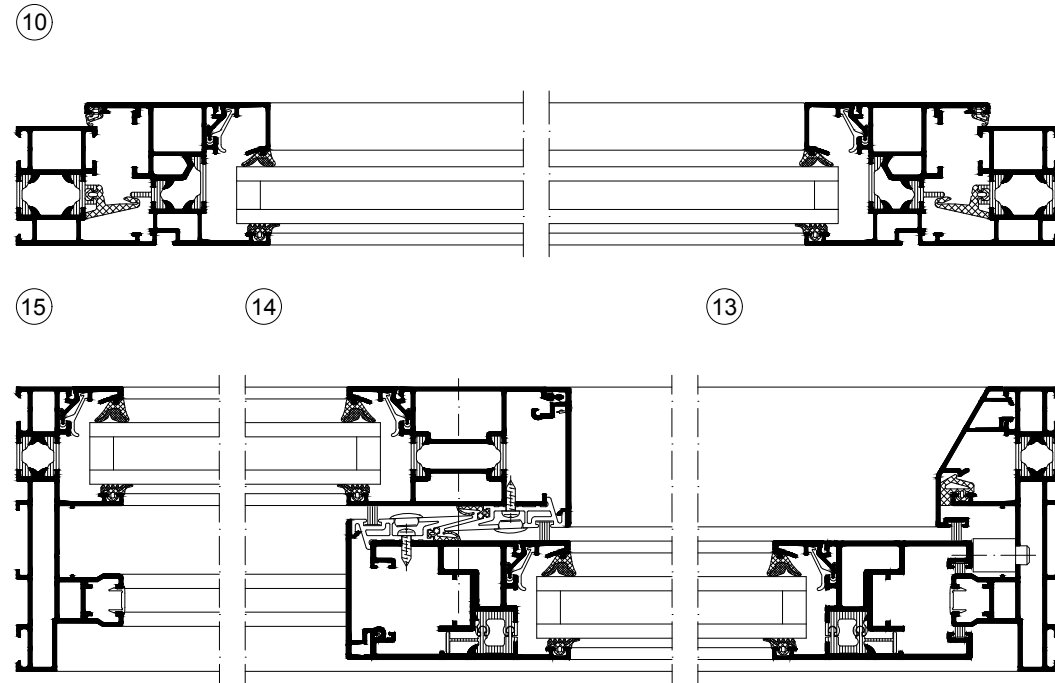
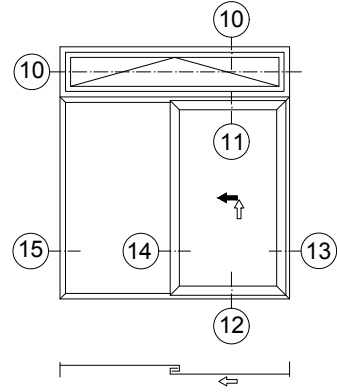
Schüco ASS 50

Typ 3F
Type 3F



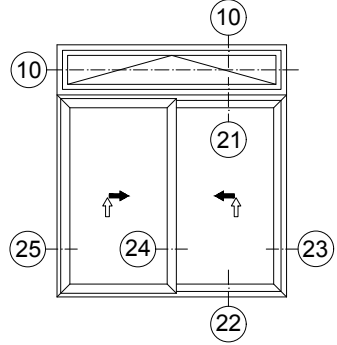
Elementschnitte - 3-gleisig Unit section details - Triple track	AB3000086
	0302
Schüco ASS 50	

Typ 1A mit Oberlicht
 Type 1A with toplight

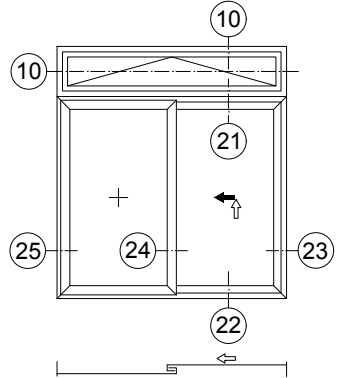


Elementschnitte - 1-gleisig Unit section details - Single track Schüco ASS 50	AB3000087
	0302

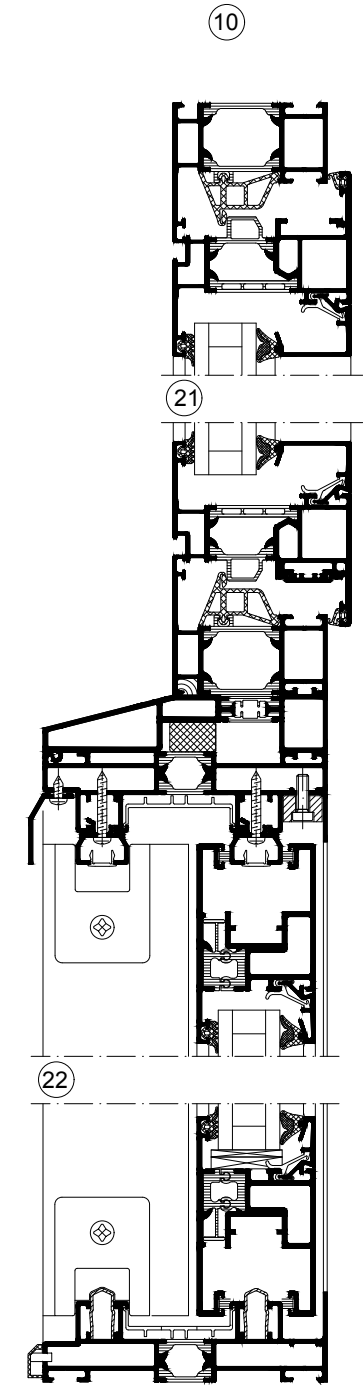
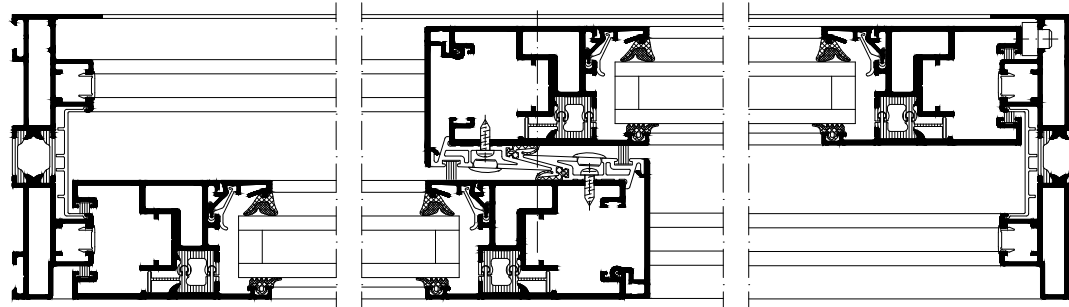
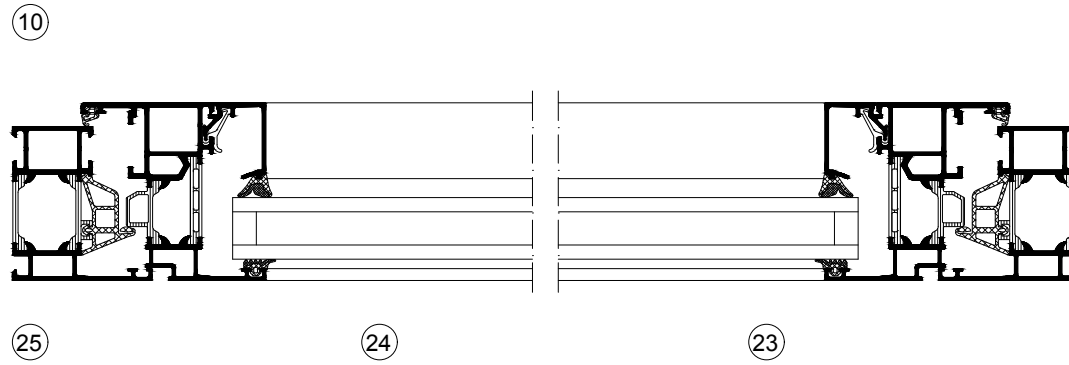
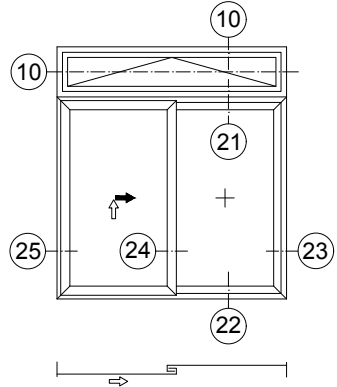
Typ 2A mit Oberlicht AWS 65
Type 2A with AWS 65 toplight



Typ 2A/1 mit Oberlicht AWS 65
Type 2A/1 with AWS 65 toplight

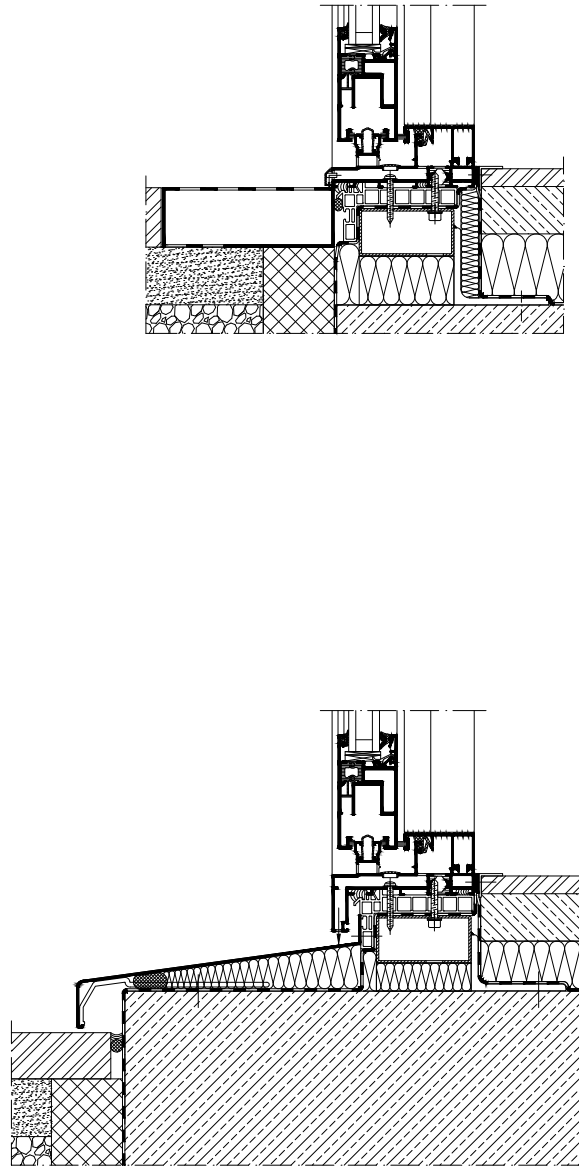


Typ 2A/1 mit Oberlicht AWS 65
Type 2A/1 with AWS 65 toplight

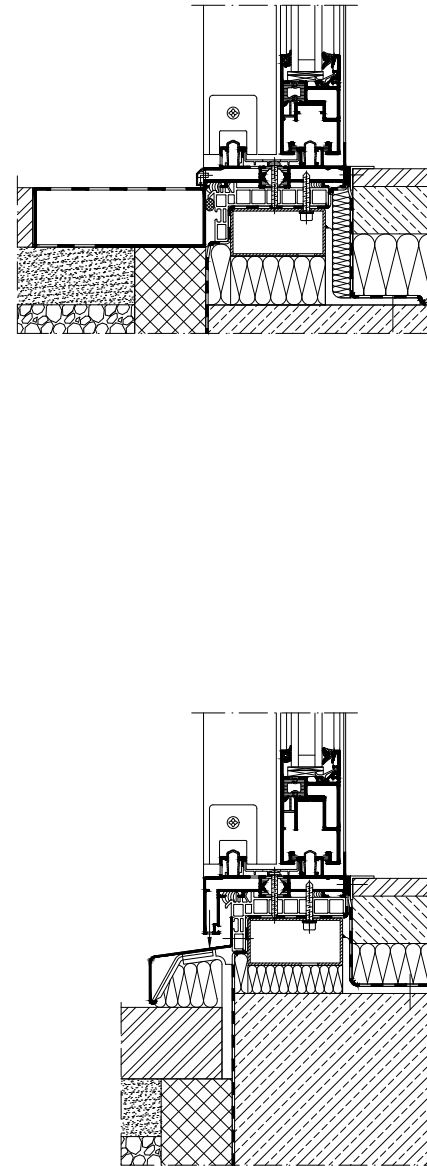


Elementschnitte - 2-gleisig Unit section details - Double track	AB3000088
	0403
Schüco ASS 50	

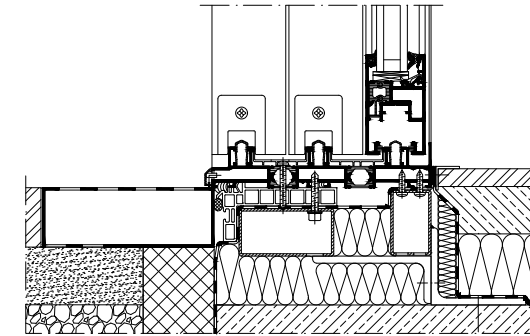
Ausführung mit 1 Laufschiene
Single-track design



Ausführung mit 2 Laufschiene
Double-track design



Ausführung mit 2 Laufschiene
Double-track design



Baukörperanschlüsse
- Schiebetür / Hebeschiebetür
Attachments to building structure
- Sliding door / lift-and-slide door

AB3000089

0302

Schüco ASS 50